

RUSSIA | STUCK PIPE

Challenge

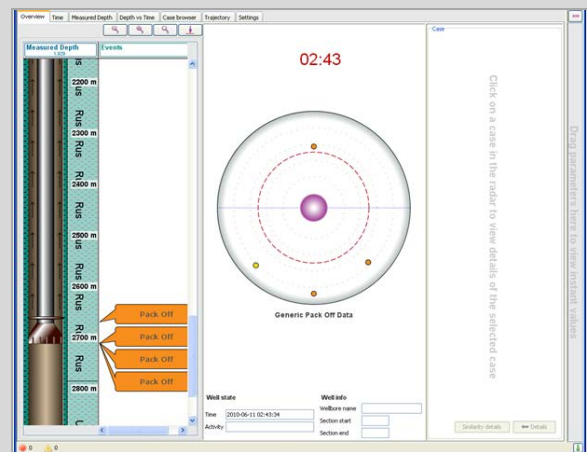
A major operator experienced stuck pipe while drilling, resulting in a several days of lost time.

Solution

Verdande Technology conducted a post job analysis using its DrillEdge technology to characterize symptoms leading up to the stuck pipe event. A specific case was built on the event from the well, and then replayed to verify its response and accuracy. Verdande Technology's DrillEdge software uses real-time data from drilling operations to index and automatically recall lessons learned, best practices, and situational experience across rigs and assets.

When the data was replayed using the specific case, the stuck pipe event was detected almost six hours before its occurrence. The well was then replayed using generic stuck pipe cases (built on North Sea data) from Verdande Technology's foundational library. Three cases from the generic library responded within eight minutes of the specific case, demonstrating that experience on wells with similar problems can be successfully recalled and applied to wells in other regions of the world.

If DrillEdge had been employed while the well was being drilled, it is possible that engineers monitoring the software and the rig crew would have been informed in time to take action resulting in a potential savings of several days of non-productive time – amounting to over US \$1.5 Million in savings.



Radar view showing well-specific case and three generic cases on the radar simultaneously.

